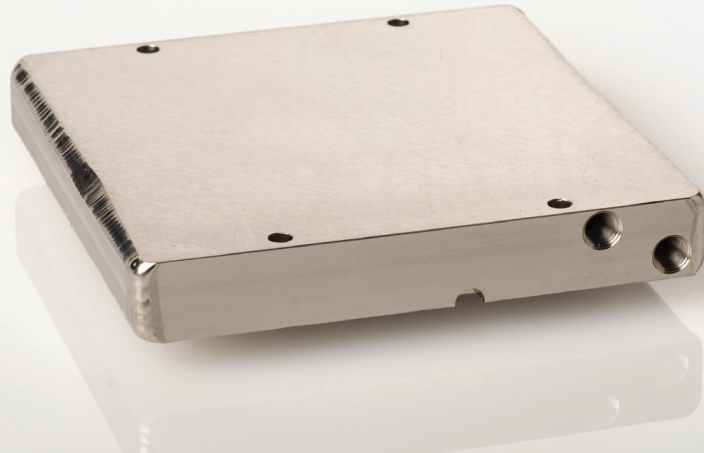
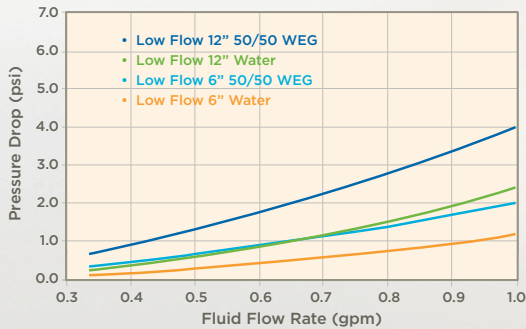


LOW FLOW COLD PLATES

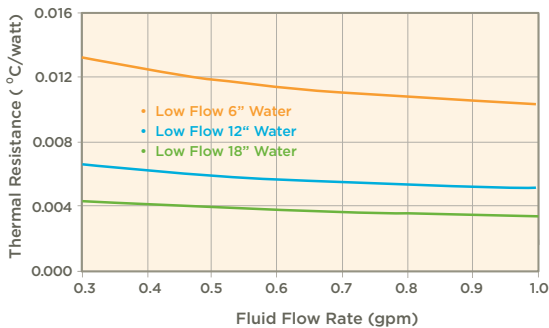
General-purpose double-sided liquid cold plates with low thermal resistance at low fluid flow rates



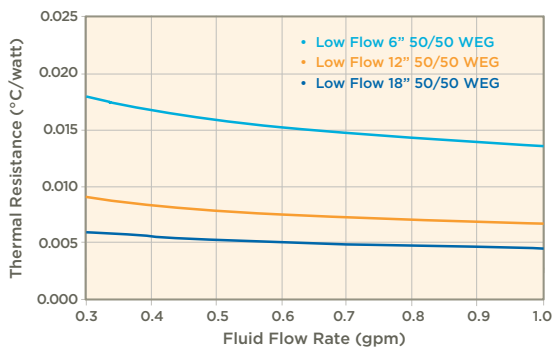
LOW FLOW COLD PLATE PRESSURE DROP



LOW FLOW COLD PLATE THERMAL RESISTANCE, EACH SIDE HEAT TRANSFER FLUID: WATER



LOW FLOW COLD PLATE THERMAL RESISTANCE, EACH SIDE HEAT TRANSFER FLUID: 50/50 WEG



WEG = Water/Ethylene glycol

Low thermal resistance; designed for < 1 gpm coolant flow

- Ideal for use with thermoelectric modules, power semiconductors and laboratory hot/cold plates.
- Patented design allows for efficient heat transfer at a low cost.
- Uniform thermal resistance over entire surface means no hot spots.
- Double-sided: both sides have the same heat transfer properties. Thermal resistance graphs are shown for one side only; all values are reduced by approximately one-half for two-sided operation.
- Drill and tap through the outer 0.45" on both sides for easy parts mounting.
- Interior may be nickel coated.

SPECIFICATIONS

| | |
|-------------------|---|
| Width | 6.0" (15 cm) |
| Height | 0.875" (2.2 cm) |
| Length | Standard lengths: 6" or 12" (15 or 30.5 cm) custom lengths available |
| Flatness | Flat to 0.0005 in./in. 0.005 in. overall (both sides) |
| Weight | Approximately 0.35 lbs per inch length |
| Material | 6063 aluminum T6 hardened |
| Standard Fittings | 1/8" FNPT |

The Right Temperature Without Fail

SSCOOLING.COM (845) 296-1300 167 MYERS CORNERS RD.
WAPPINGERS FALLS, NY 12590

Solid State
COOLING SYSTEMS
Temperature Control...Precisely.