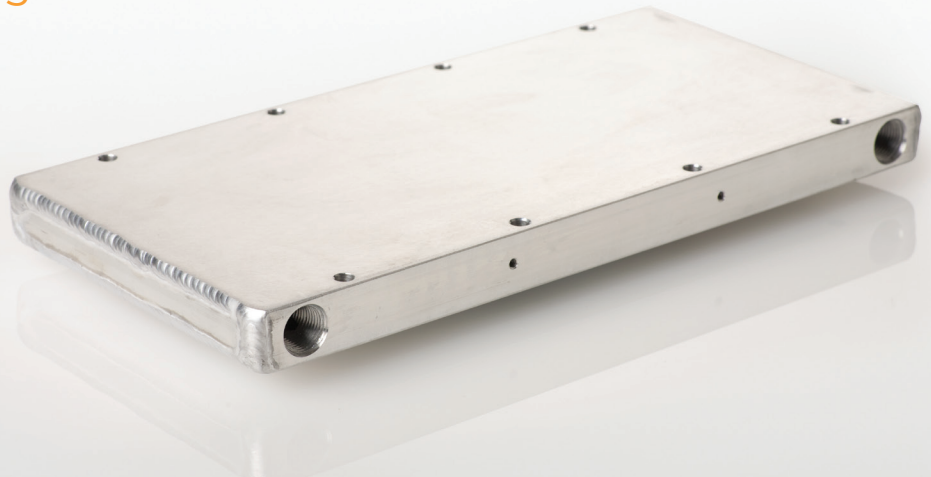
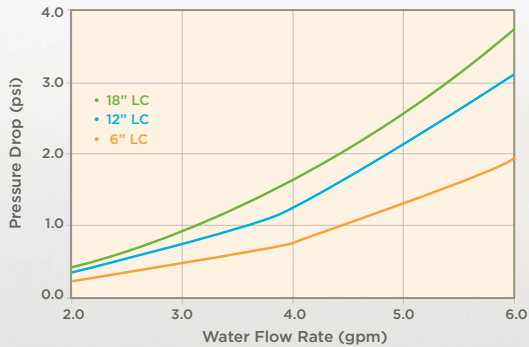


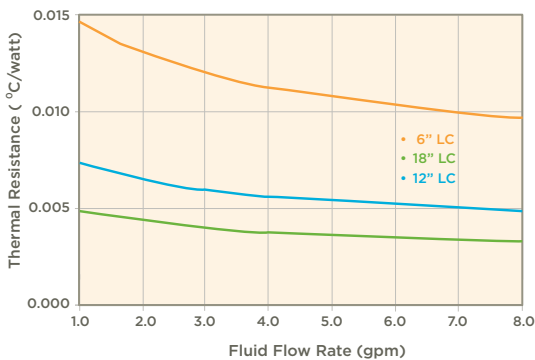
# LC COLD PLATES

General-purpose liquid cold plates with low-pressure drop for high fluid flow rates and high heat loads

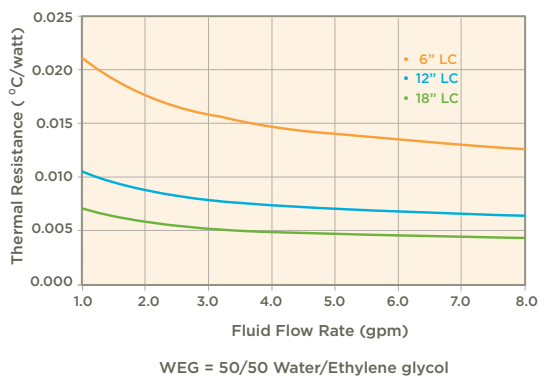
LC COLD PLATE PRESSURE DROP



LC COLD PLATE THERMAL RESISTANCE, EACH SIDE  
HEAT TRANSFER FLUID: WATER



LC COLD PLATE THERMAL RESISTANCE, EACH SIDE  
HEAT TRANSFER FLUID: 50/50 WEG



Low thermal resistance, low pressure drop, at a low price

- Ideal for use with thermoelectric modules, power semiconductors and other direct cooling applications.
- Patented and patent-pending design allows for efficient heat transfer at a low cost.
- Uniform thermal resistance over entire surface means no hot spots.
- Double-sided: both sides have the same heat transfer properties. Thermal resistance graphs are shown for one side only: all values are reduced by approximately one-half for two-sided operation.
- Drill and tap through the outer 0.45" on both sides for easy parts mounting.
- Interior may be nickel coated.

## SPECIFICATIONS

Width	6" (15.2 cm)
Height	0.875" (2.2 cm)
Length	Standard lengths: 6" (15.2 cm) and 12" (30.5 cm); custom lengths available
Flatness	Flat to 0.0005 in./in. 0.005 in. overall (both sides)
Weight	Approximately 0.35 lbs per inch length
Material	6063 aluminum T6 hardened
Standard Fittings	3/8" FNPT

The Right Temperature Without Fail

SSCOOLING.COM (845) 296-1300 167 MYERS CORNERS RD.  
WAPPINGERS FALLS, NY 12590

**Solid State**  
**COOLING SYSTEMS**  
Temperature Control...Precisely.