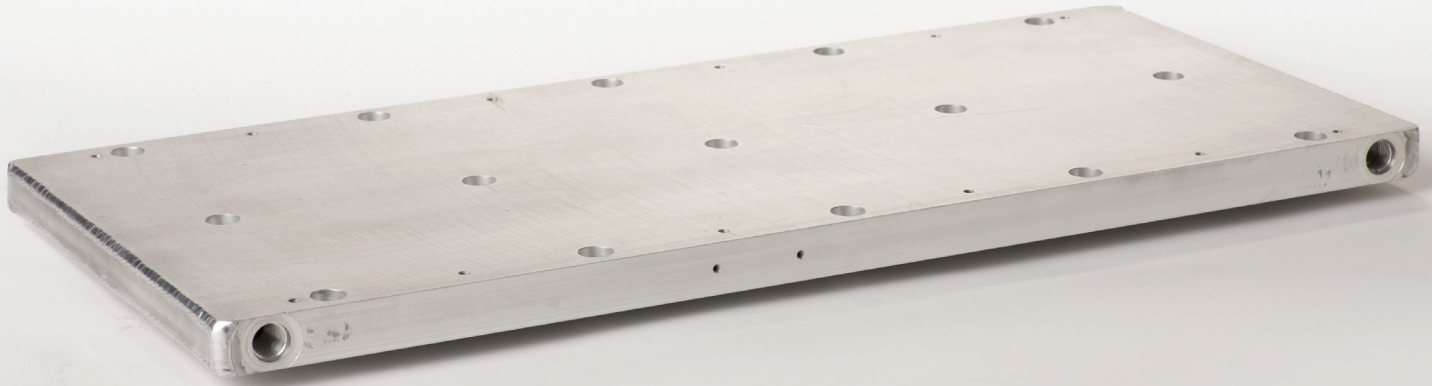
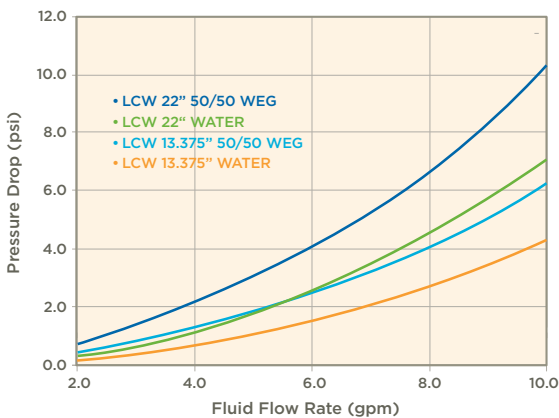


LCW COLD PLATES

Large area liquid cold plates for low-pressure drop and high heat loads



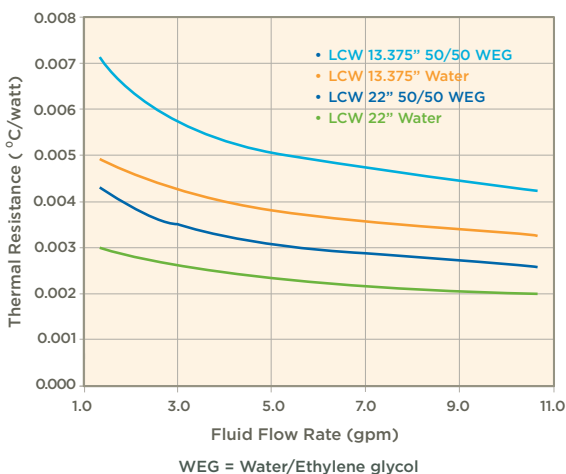
LCW COLDPLATE PRESSURE DROP



Low thermal resistance, low pressure drop, at a low price

- Ideal for use with thermoelectric modules, high performance electronics and other direct cooling applications.
- Patented and patent-pending design allows for efficient heat transfer at a low cost.
- Uniform thermal resistance over entire surface means no hot spots.
- Double-sided: both sides have the same heat transfer properties. Thermal resistance graphs are shown for one side only: all values are reduced by approximately one-half for two-sided operation.
- Drill and tap through the outer 0.75" on both sides and center 0.75" for easy parts mounting.
- Interior may be nickel coated.

LCW COLD PLATE THERMAL RESISTANCE, EACH SIDE



SPECIFICATIONS

Width	9.75" (24.8 cm)
Height	0.875" (2.2 cm)
Length	Standard lengths 13.375" (34 cm) or 22" (55.9 cm); custom lengths available
Weight	Approximately 0.7 lbs \per inch length (125 g/cm)
Flatness	Flat to 0.0005 in./in. 0.005 in. overall (both sides)
Material	6063 aluminum T6 hardened
Standard Fittings	3/8" FNPT

The Right Temperature Without Fail

SSCOOLING.COM (845) 296-1300 167 MYERS CORNERS RD.
WAPPINGERS FALLS, NY 12590

Solid State
COOLING SYSTEMS
Temperature Control...Precisely.